

Data sheet

V900-022-008 Reading unit locate | LF | Winding table | Plug-in power supply | Reed contact



Description

This reading unit (LF) creates a spherical detection field on a winding table. This detection field "wakes up" transponders from their stand-by mode as soon as they are brought into the field. Immediately, the transponders now send their own ID as well as the ID of the reading unit to the receiving unit (HF). The received data is now sent to the SCC5.0 software and processed. The associated reed contact switches the detection field on when the changing table is folded up, provided a foldable table is used. The reed contact consists of two magnetic contacts, which in turn are housed in two housings. The first housing is wired, integrates the reed contact and is mounted on the door frame. The second housing contains a magnet and is mounted directly on the door leaf.

- Connection cable: 6m
- Diameter: 3mm

This article is used for the "Baby" feature of the SCC5.0 software. If an infant together with a baby transponder and a carer together with a mother or caregiver transponder are in the LF field of the reading unit, the baby transponder can be removed without triggering a removal alarm, e.g. when changing diapers. In addition, an alarm is generated if a baby transponder alone is in the LF field of the changing table without a corresponding mother or caregiver transponder.

Data table

Dimensions PCB LF (WxHxD)	80 x 100 x 17 mm
Radio frequency	125 kHz detection field, 868 MHz communication frequency
Power supply	12-26 V (DC)
Current consumption at 12V DC	100 mA to 200 mA (depending on the range setting)
Current consumption at 24V DC	50 mA to 100 mA (depending on the range setting)
Weight	72g
Connections	Connection LF antenna
	HF antenna connection socket (optional)
	2 x optocoupler input
Housing dimensions (WxHxD)	230 x 143 x 34.5 mm
Total weight	454 g
Degree of protection	IP 42 - not suitable for outdoor installation
Housing colour	RAL 9010 white (OEM version); RAL 7016 anthracite
Material	ABS PA 765
Cable inlets	Several predetermined breaking points for cable inlets available
Reed contact dimensions	
Contact (WxHxD)	55 x 10 x 10 mm
Magnet (WxHxD)	55 x 10 x 10 mm
Contact types	1 changeover contact type U
Installation	Surface-mounted
Cable	6 m, white, 3 x 0.14 mm
Contact load	30 VDC, 0.2A, 3W
Dielectric strength	1 sec. 150 VDC
Degree of protection	IP 68, DIN40050

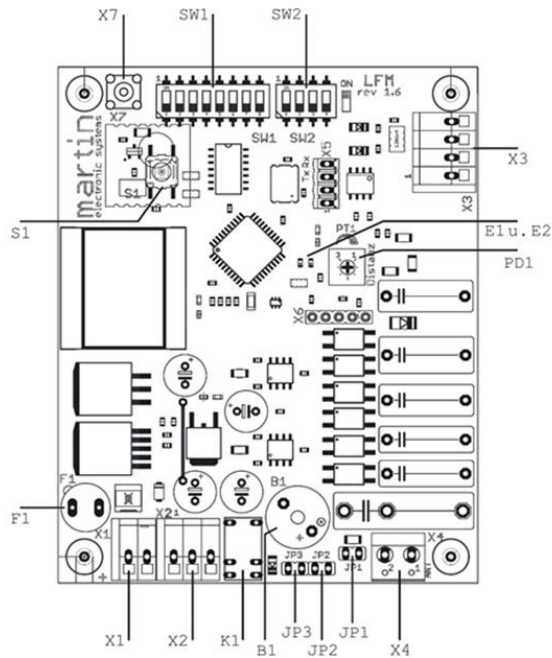


Figure 1 Sketch LF board

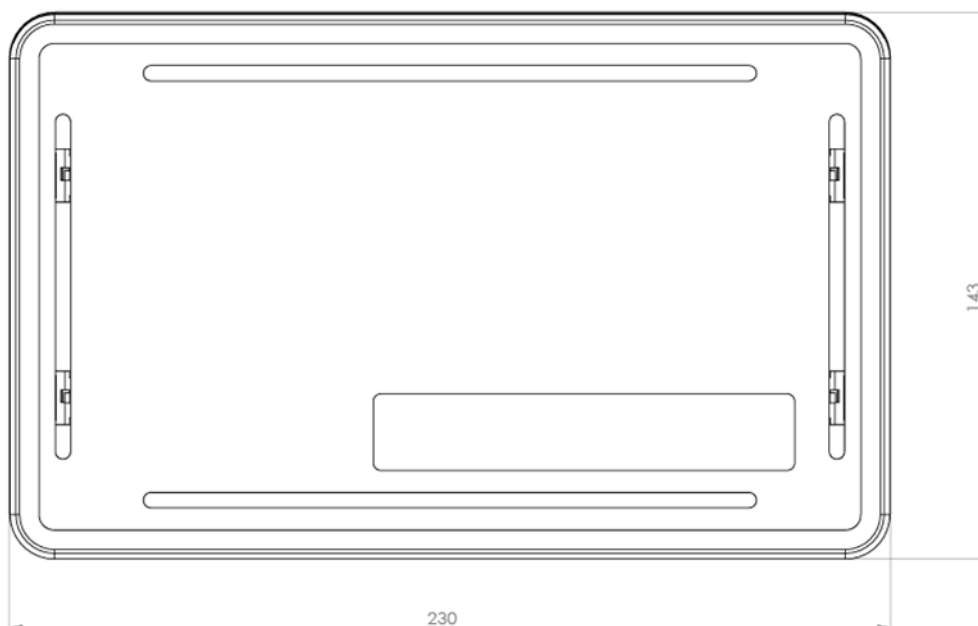


Figure 2 Sketch housing front view

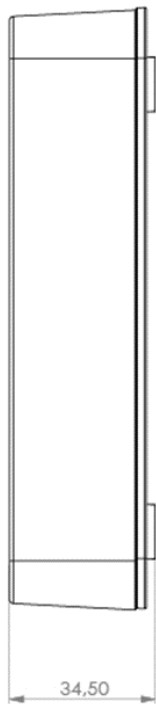


Figure 3 Sketch housing side view



Figure 4 Reed contact

Martin Elektrotechnik GmbH hereby declares that the article V900-022-008 is in conformity with Directives 2014/53/EU, 2014/35/EU, 2014/30/EU. The full text of the EU Declaration of Conformity is available at the following website: <https://martin-elektrotechnik.freshdesk.com/support/solutions>

The manufacturer BSW SECURITY AG/SA declares that the product 10362N.06 Surface-mounted magnetic contact is in conformity with Directive 2004/108/EC. The full text of the EU declaration of conformity is available at the following internet address: www.bsw.swiss/downloads

The content has been compiled with the utmost care and is based on information that is considered reliable. However, no liability can be assumed for its accuracy.

Copyright

© 2020, Martin Elektrotechnik GmbH. All rights reserved.

This publication may not be reproduced in whole or in part, stored in a retrieval system, or transmitted in any form or by any means, electronic, photocopying, recording or otherwise, without the prior written permission of Martin Elektrotechnik GmbH.

Disclaimer

It is our endeavour to develop, manufacture and document our products and corresponding documentation with the greatest possible care. However, Martin Elektrotechnik GmbH assumes no obligation or warranty with respect to the contents of this documentation and specifically disclaims any liability for merchantability or fitness for a particular purpose. In addition, Martin Elektrotechnik GmbH reserves the right to revise this publication and to make changes from time to time without obligation of Martin Elektrotechnik GmbH to notify any person of such revisions. The latest version of these operating instructions can be downloaded from the Internet at <https://martin-elektrotechnik.freshdesk.com/support/solutions>.